



9 Pine Gardens

Mannamead, Plymouth, PL3 4FG

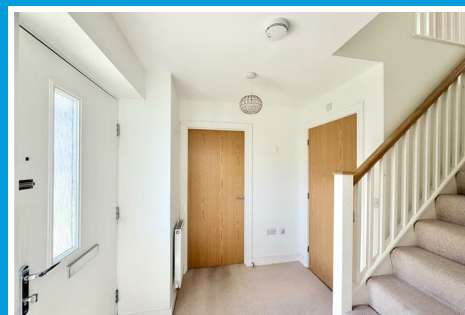
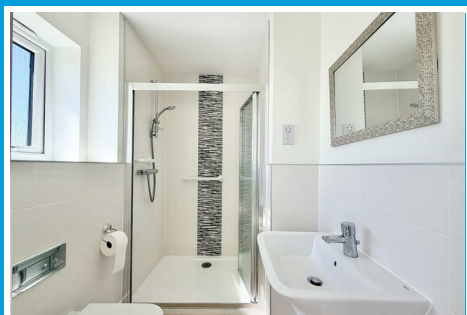
£600,000



9 Pine Gardens

Mannamead, Plymouth, PL3 4FG

£600,000



PINE GARDENS, MANNAMEAD, PLYMOUTH, PL3 4FG

LOCATION

Cul-de-sac in central Mannamead/Peverell with a good variety of local services & amenities nearby. The position is convenient for access into the city & close-by connection to major routes in other directions.

SUMMARY

A rare opportunity to acquire this modern detached executive residence, built in 2015 and owned from new. Occupying a pleasant position within a small cul-de-sac, this well maintained home offers light and airy accommodation throughout, with minimal use since construction and a condition that still feels close to new.

Finished to a good specification, the property benefits from double glazing and central heating, together with stylish and well-proportioned living spaces ideally suited to modern family living.

Externally, the home occupies a manageable, near-level plot with excellent off-road parking provided by a generous 21ft long driveway leading to a large double garage. The gardens are well kept to the front, whilst the enclosed rear garden provides a private and secure outdoor space.

Internally, the accommodation briefly comprises a superb 26ft lounge, alongside a spacious fitted kitchen/dining room with utility area, creating an ideal hub for entertaining and everyday family life. A cloakroom/WC completes the ground floor accommodation.

To the first floor are four double bedrooms, including an impressive principal bedroom with a well-appointed en-suite shower room, together with a separate modern family bathroom.

Offered with vacant possession and no onward chain, this home is ready for immediate occupation and early viewing is highly recommended.

ACCOMMODATION

GROUND FLOOR

STORM PORCH

RECEPTION HALL

Staircase rises to the first floor.

CLOAKROOM

6'3" x 3'10" (1.91m x 1.19m)

White modern suite with wc & wash hand basin.

LOUNGE

26'2 x 12'9 (7.98m x 3.89m)

Triple aspect with wide-bay window to the front, one to the side and tri-fold doors overlooking & opening up to the rear garden. Focal feature of a fireplace with fitted electric fire.

KITCHEN/DINING ROOM/UTILITY

26'2 x 16'10 maximum (7.98m x 5.13m maximum)

"L-shaped". Quality fitted, integrated kitchen with a good range of cupboard & drawer storage. Integrated appliances include 4 ring, stainless steel gas hob with glass splash-back and extractor over. 2 Electrolux ovens under. 1.5 bowl sink unit. Electrolux dishwasher. Zanussi washing machine. Open to the utility area with

door to the rear, incorporating an Electrolux upright fridge/freezer. Adjacent cupboard housing a Potterton Promax HE Plus boiler, servicing the central heating and domestic hot water. Access to walk-in under-stairs cupboard.

FIRST FLOOR

LANDING

MASTER BEDROOM

13'3 x 12'10 (4.04m x 3.91m)

EN-SUITE SHOWER ROOM

6'9 x 5'9 (2.06m x 1.75m)

Wall hung wash hand basin & close coupled wc. Shower with thermostatic control & shaver socket.

BEDROOM TWO

11'8 x 11'2 (3.56m x 3.40m)

BEDROOM THREE

11'2 x 9'8 (3.40m x 2.95m)

BEDROOM FOUR

9'6 x 9' (2.90m x 2.74m)

BATHROOM

8'1 x 5'7 (2.46m x 1.70m)

Quality, white & modern suite with Rocca wall-hung wash hand basin & wc. Panelled bath with a mixed tap & shaver socket.

OUTSIDE

21ft long drive by 20ft wide. Mains electric point to one side & cold water tap. Level front garden. Gate leads to path through to enclosed rear garden. Wide paved patio next to the property & a lawned garden beyond. Fence boundaries & outside water tap.

COUNCIL TAX

Plymouth City Council
Council Tax Band: E

SERVICES

The property is connected to all the mains services: gas, electricity, water and drainage.



Road Map



Hybrid Map

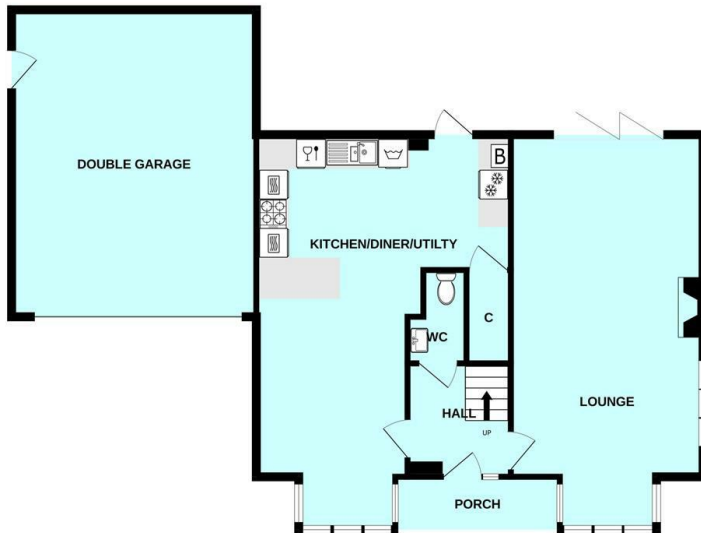


Terrain Map

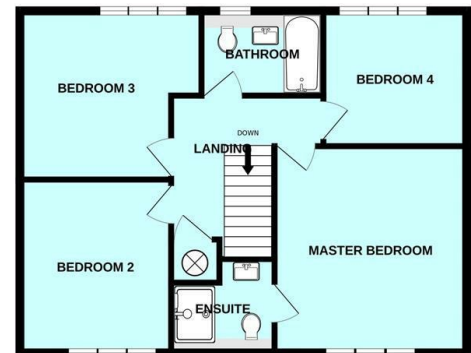


Floor Plan

GROUND FLOOR



1ST FLOOR

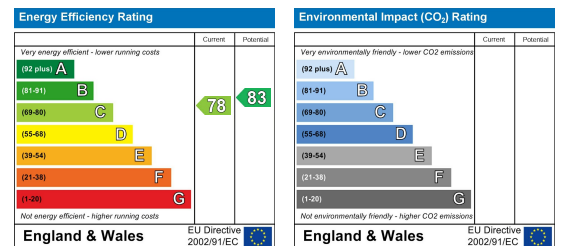


Made with Metropix ©2026

Viewing

Please contact our Plymouth Office on 01752 664125 if you wish to arrange a viewing appointment for this property or require further information.

Energy Efficiency Graph



These particulars, whilst believed to be accurate are set out as a general outline only for guidance and do not constitute any part of an offer or contract. Intending purchasers should not rely on them as statements of representation of fact, but must satisfy themselves by inspection or otherwise as to their accuracy. No person in this firm's employment has the authority to make or give any representation or warranty in respect of the property.